

NEW



# OmniSite Viper

Do-It-Yourself Lift Station Alarm Kit  
Installs in 4 Easy Steps!



Web-based cellular lift station alarm monitor and data collector designed for waste water treatment.

## Now Anyone Can Install a SCADA System

For customers with little to no electrical experience, OmniSite has created a Viper Quick Connect Kit which eliminates the need for custom field wiring. The kit can include one, two, or three pump monitoring current switches. Installation is made simple and takes just a few minutes.

The OmniSite Viper is a complete “SCADA in a box” with all pieces you will need to mount and make your connections; no additional parts or software needed.

## Features Over-the-Air Configurations and Push-to-Test

There are no field software parameters to set up. All system settings and firmware updates are done completely over-the-air (OTA) through the GuardDog Web site or mobile phone interface. This makes multiple return trips to the job site unnecessary. As an added feature, the “Push-to-Test” button at the Viper unit ensures your equipment is fully functional.

OmniSite Viper is the only patented product of its kind and was developed specifically for water and wastewater treatment systems. Simple to set up and use, it requires no additional software and minimal maintenance. OmniSite is the most affordable solution for monitoring environmental equipment of any type.

## Peace of Mind

The Viper gives operators of water and wastewater treatment facilities peace of mind that their equipment is running properly at all times. Notification of an alarm occurs within seconds via e-mail, phone, or by text. The system allows a quick response to correct the situation.

## Quick Overview

### The Essentials:

- (5)\* Universal voltage inputs
- (1) Optional analog input
- Transmits/receives using Cellular GSM
- Magnetic key to disable/enable unit
- SMS Backup—if the OmniSite Web site has a system outage or a natural disaster prevents normal Web monitoring, the Viper can send an SMS text message directly to your cell phone.

For more information on this new, exciting product, please visit our Web site at [www.OmniSite.com](http://www.OmniSite.com).

*\*Includes 3 inputs to monitor pump activity, or these same three can be used as alarm inputs.*





# Viper Product Tour

One kit does it all, no additional parts or software needed.



1. NEMA 4X locking hasp for padlock.
2. Gasketed NEMA 4X and UL approved enclosure with gasketed door and internally-mounted antenna for rugged environments.
3. Convenient pocket to hold User's Guide.
4. Door prop to hold open door for shade, rain, or snow shield.
5. High visibility two-digit LED display and single-button interface for system diagnostic.
6. Push-to-test button sends text message, e-mail, or phone call to your list to verify operation.
7. Location to apply magnetic key to enable/disable unit to eliminate false alarms while working on pumps or equipment.
8. Long-life, rugged battery backup to keep unit running up to 20 hours during AC power failure.
9. Fast, convenient color-coded wiring harness included to make installation a snap (8 ft. length).

## Attaching Your Viper Quick Connect Accessories

Installation is 4 Easy Steps!

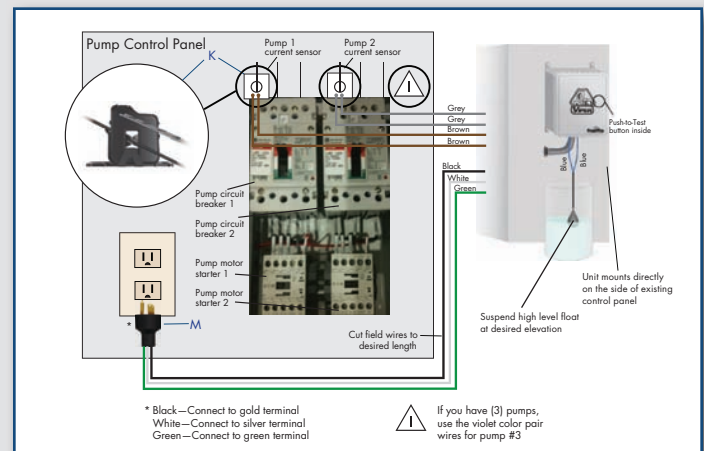
1. Clip on your amp probes (one goes on any hot leg of each pump), and connect the supplied color-coded wiring harness as shown.
2. Suspend your high-level float at the desired elevation, and connect to the blue wires.
3. Plug in your unit.
4. Use the push-to-test button to verify your unit is working.

It is just that easy!

Be prepared to get all this information on your private Web page and cell phone with your simple installation.

- High-level alarm and restore to normal
- Power failure alarm and restore to normal
- Battery failure alarm and restore to normal
- Pump on/off cycles/day
- Pump runtime/day

This is a low-cost, easy-to-use solution for smaller pump stations.



Wiring harness color coding system for QuickConnect Kit is shown to the right:

Color Code	Function
Black	Power wire—HOT (120V)
White	Power wire—NEUTRAL
Green	Power wire —GROUND
Pair of Blue	High Level Float
Pair of Yellow	Not Used—Spare
Pair of Violet	Pump 3 Current Sensor
Pair of Brown	Pump 2 Current Sensor
Pair of Grey	Pump 1 Current Sensor

## Your OmniSite Viper Kit comes with all of the following standard parts:



Included stainless bolts will not rust and used to mount your unit directly on the side of existing pump control panel.



Stainless washers will not rust. Used with stainless mounting bolts.



Stainless locknut used to secure unit to side of your existing pump panel.



Rubber washers seal the holes drilled in your panel for a weather-tight seal.



Two supplied conduit fittings eliminates trips to the hardware store.



Supplied sealite conduit supplies a weather-tight connection.



Eight-foot, color-coded wiring harness eliminates pulling and labeling wires.



OmniSite-supplied Sharpie® marker used to mark your mounting holes.



One, two, or three snap-on current switches tells if your pumps are running and eliminates field wiring into motor starter circuits.



Viper magnetic key maintains NEMA 4X enclosure integrity and used to enable/disable alarm functions.



Convenient 120V power plug is used to power unit when receptacle is nearby.

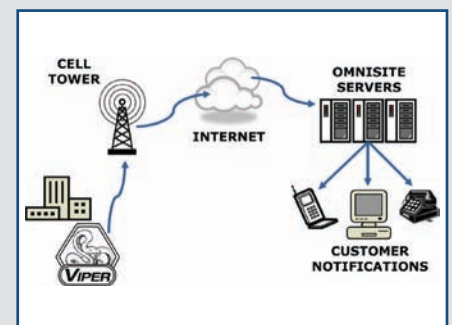


Mercury-free high-level float connects directly to the Viper for dedicated backup high-level alarm. Long life, quality float switch.

## How OmniSite Works

OmniSite relies on a combination of cellular telephone and Web-based technology. The Viper sends a wireless signal to the local cellular tower. That signal is bounced to OmniSite's Web interface, where you can log on—any day, anytime, from any computer—and see how your remote equipment is operating. A “call out” list is set up online. When an alarm is triggered, identified operators are contacted immediately.

Because OmniSite engineers recognize today's fast-paced busy world, that notification comes by way of text message, e-mail or call to your cellular or hard-wired phone.



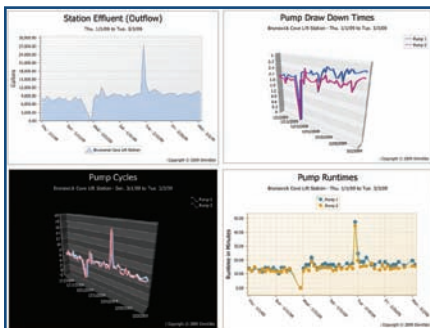
The Viper includes OmniSite's "plug and play" GuardDog Web interface which eliminates the need for custom programming.



OmniSite's GuardDog online interface provides simple Web navigation for monitoring environmental equipment of any type.

**Critical Data Available Online:**

- Pump run time
- On/off cycles
- Alarm events and deliveries
- Event history
- Extensive logging
- Interactive map



Various ways to analyze trends and perform advanced data analyzation.



GuardDog is also available for the iPhone™ and iPod Touch® devices and may be freely downloaded from the App Store or by using iTunes. View data anywhere, anytime.

©2010 OmniSite. All rights reserved.

# Specifications



**I/O:** Accepts (5) Universal Inputs—any voltage in the range of + 12VDC or VAC to + 120VDC or VAC.  
Opto-isolated 4000 VAC isolation

**Optional (1) 4-20mA analog input.** Includes 4000V opto-isolation, 10 bit resolution

**Input Power:** 120 VAC +/- 10% or 12 VDC +/- 10%

**Battery Backup:** Internal 4 VDC, rechargeable sealed lead acid battery rated up to 20 hours of backup during AC power loss

**Operating Temperature:** -20° to 150° F

**Operating Humidity:** 0-90% RH, non-condensing

**Radio:** Motorola Quad Band GSM cellular transceiver 850-900-1800-1900, -106dBm sensitivity (typical), Class 4 (2W @ 850/900 MHZ) class 1 (1W @1800/1900 MHZ). Certification FCC Parts 15, PTCRB

**Antenna:** Internal concealed antenna, optional externally-mounted antenna for panel mount units

**Display:** Simple 2-digit LED display

**Enclosure:** NEMA 4X polycarbonate plastic enclosure with locking hasp

**Dimensions:** 7.0"W x 7.0"H x 3.0"D

**Weight:** 3.0 lbs

**Certification:** UL Pending

**Protection:** US Patent #7,228,129

## Ordering Information

**Model—Options**

Viper  -  A -  B -  C -  D

A	Specify number of pump current switches
00	None
01	(1) clip-on pump current switch
02	(2) clip-on pump current switches
03	(3) clip-on pump current switches
B	Select analog option
0	None
AIN	4-20 mA single channel analog input
C	Select kit type
00	Standard kit includes <b>all</b> mounting hardware, conduit wire, no float—order float separately below
OEM	No mounting hardware, no float; includes only (1) 120V OEM wiring harness
D	Select float option
0	No float
FLT	High-level, non-mercury NC float with 50' cable

