

CrystalBall

The Complete Monitoring
Solution



Cellular Pump Station Monitor | Backup Pump Controller

What it Does

The OmniSite Crystal Ball doubles as both a **Cellular Pump Station Monitor** and a **Backup Pump Controller**, making it the perfect solution for monitoring critical or remote applications.



Save Time and Money

The Crystal Ball is easy to install and program. When an alarm occurs at a station monitored by a Crystal Ball, you'll be notified within seconds – quickly enough to correct the situation and avoid costly problems. Our products and services are a fraction of the cost of alternative solutions. Why? Because we believe being on a tight budget shouldn't prevent you from accessing important tools in your industry.

Real-Time Data & Alerts | When You Need It. How You Want It.

OmniSite reports are sent every 24 hours with options to report every 15 minutes with Elite Reporting or even instantly through GuardDog, our FREE monitoring software program. Receive alerts by *email, phone, text message, or any combination of the three*. It's your choice.

Fixed Cost Cellular Service

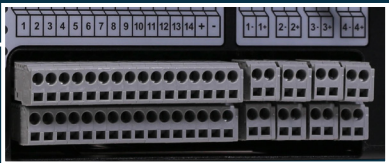
We use the largest wireless networks so your signal is strong and reliable. OmniSite was first to use cellular to monitor pump stations, freeing you from high-cost, high-maintenance, complicated, traditional SCADA solutions. And best of all, *our cost for wireless service has not increased in the last decade*, allowing you to always know your budget. How many service providers can say that?

SPECIAL FEATURES



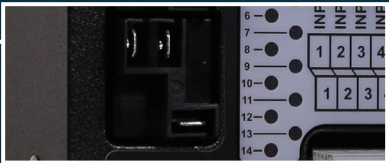
CUSTOMIZABLE I/O

Fourteen Universal Digital Inputs and 4 Analog Inputs, accept 12 VAC/VDC – 120 VAC/VDC, allowing you to wire up floats and sensors directly to your monitoring device.



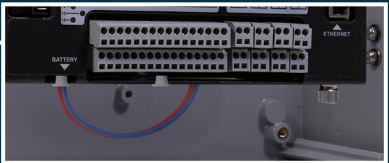
BUILT-IN PUMP CONTROL

Four 20A @ 120VAC resistive Relay Outputs allow for backup pump control.



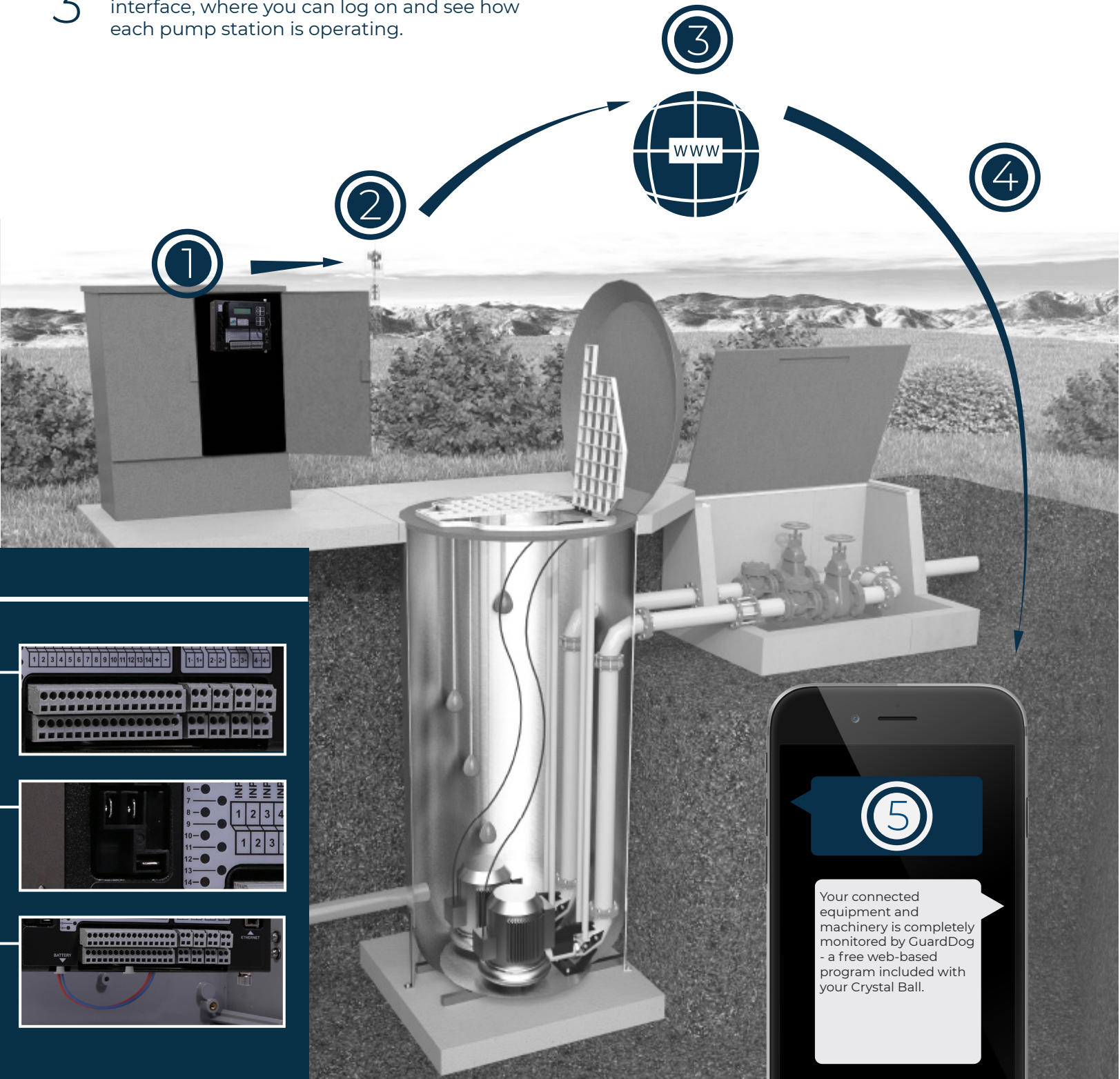
BACKUP BATTERIES

On-board 12 V power supply means your device will continue to monitor and send alerts even if the main power is down.



How it Works

- 1 Your Crystal Ball is installed at pump stations.
- 2 It sends a wireless signal to the local cellular tower.
- 3 That signal is bounced to OmniSite's web interface, where you can log on and see how each pump station is operating.
- 4 If an alarm is triggered at a pump station...
- 5 ...the identified operators are contacted immediately, via text message, email, or call



Works With



4-20mA Amp Probe

Monitor your power output with our 4-20mA Amp Probes. This current sensor will monitor AC motor amperage from 50-200 amps. The sensor outputs a 2-wire, 4-20mA signal, allowing

you to know if a pump is becoming clogged or failing. The sensors are a split-core, where the conductor runs through the sensor.

Explosion Proof I- Level

This high-quality, submersible level probe is used to measure the water level in any sump pit, or tank where the water level does not exceed 20ft. Standard bottom weight allows the installer to sit the level probe on the bottom of the measured vessel, eliminating calibrating

offsets into the probe reading when it is suspended in fluid, and letting the user take as direct readings as the probe reads from the tank bottom.

Peer to Peer Control & Real Time Reporting

We are thrilled to introduce our cutting-edge peer-to-peer capabilities and real-time reporting features, now available for all units, regardless of age. This innovation opens the door to a new market in municipal drinking water pump and water tower automation with enhanced peer-to-peer control. If you're contemplating an upgrade, now is the perfect time to reach out to us and discover how we can elevate your operations!

Why Pump Data is Important

Pump runtimes, on/off cycles, amp, and pump GPM readings allow you to always know that all systems are functioning normally. If they start trending in the wrong direction, you'll know before a pump failure, and can schedule that pump for preventive maintenance before a major breakdown. This saves you time, money, manpower, and frees you to focus on the bigger issues.

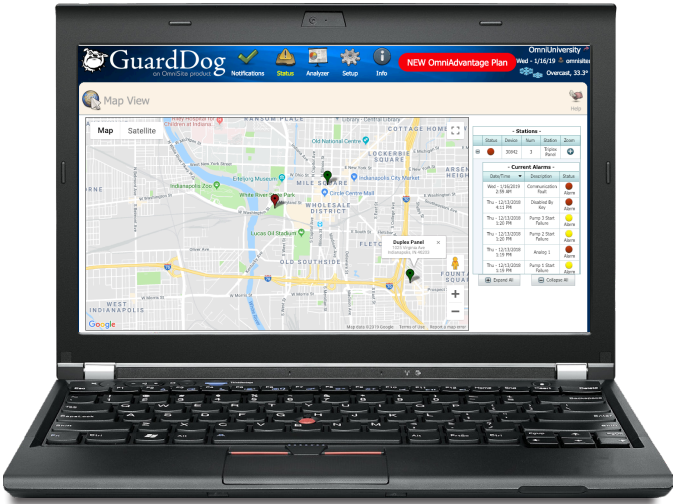
DEVICE SPECS

Power	12 VDC or 120 VAC
Communications	Cellular 4G 850/900/1800/1900 MHZ
Access Key	Smart security key to identify personnel on site
Terminal Blocks	Removable style accepts #14-18 AWG solid or stranded wire
Operating Temp	-20/150 Deg F
Operating Humidity	0-90% RH Non-condensing
Dimensions	8.9"H x 9.4"W x 3.5"D
Memory Stick	32Mb- 1 Gb user selectable
LCD Display	Backlit 4 x 16
Keypad	(4) universal navigation buttons
Analog Inputs	(4) 4-20mA, isolated, 10 bit resolution
Relay Outputs	(4) 20A @ 120VAC resistive
Digital Inputs	(14) Universal Inputs accept 12 VAC/VDC – 120 VAC/VDC
Protections	US Patent #7,228,129 and #7,778,633



GuardDog

WEBBROWSER • MOBILEAPP



Our GuardDog software provides a powerful and intuitive interface which allows users to manage their systems, easily view alarms, and analyze trends for critical machinery & equipment.

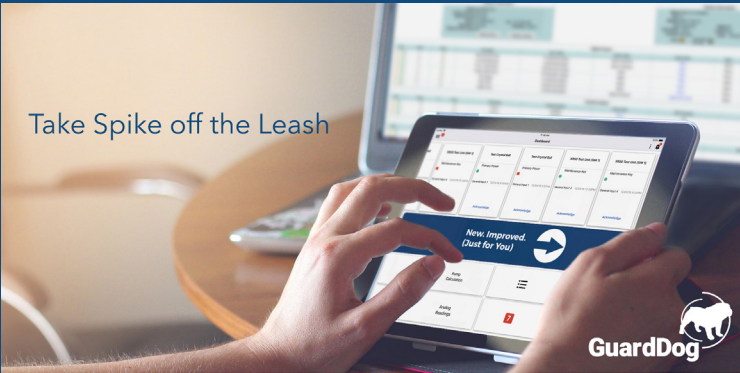
The software is 100% web-based and is included FREE with every OmniSite device.

We've been in the water and wastewater monitoring industry for over 20 years. Our expertise in knowing what our customers need is demonstrated through the functions and features of GuardDog, a software that has set the industry standard for delivering important information when you need it.

Lift Station Management On-The-Go

GuardDog 2 is a companion app to our web-based interface. It allows access to equipment status from any one of OmniSite's alarm monitors. Using this app in combination with the GuardDog web interface makes it possible to monitor your equipment right from your pocket.

Take Spike off the Leash

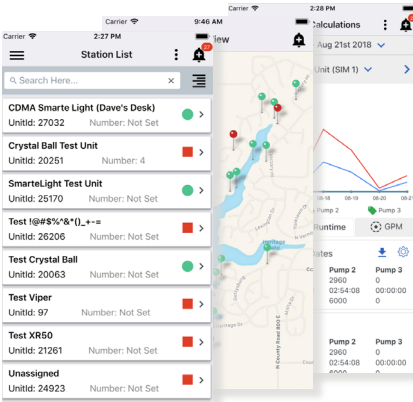
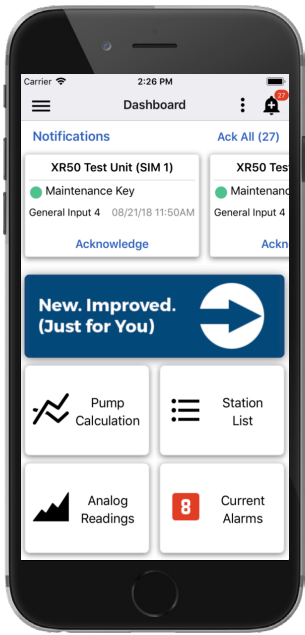


Packed with Features

With the GuardDog 2 Mobile App you can:

- Know the current condition of your stations
- Acknowledge current alarms
- Track GPMs, Runtimes, and other station trends with instantly generated reports
- Enable Map View to see the exact location of an alarm
- Send Remote Commands

Do this and more from anywhere by using your mobile device.



**Some features of the GuardDog 2 Mobile App are available exclusively to OmniAdvantage customers. For more information, visit omnisite.com/omniadvantage*

OMNISITE IS PROUD TO OFFER

- **FIRST-CLASS TECHNICAL SUPPORT**
 - **FREE IN-HOUSE TRAINING FOR ALL OPERATORS, TECHNICIANS, AND REPS**
 - **DESIGNED AND ASSEMBLED IN THE USA**
 - **FREE PRODUCT AND SOFTWARE DEMO**
-

The OmniAdvantage Plan

Put an end to repair and replacement costs. As an OmniAdvantage Plan member you get:

- Lifetime Product Updates
- Lifetime Radio Upgrades
- Free Software Upgrades and Full-Featured GuardDog 2 Mobile App
- GuardDog Web Browser Setup and Priority Support
- Professional Training

Want to learn more?

Contact one of our OmniAdvantage experts at 317-885-6330 ext: 137

Email omniadvantage@omnisite.com

Visit www.omnisite.com/omniadvantage

CONTACT US

ADDRESS

203 W. Morris St.
Indianapolis, IN 46225

PHONE

Sales : 317-885-6330 x 4
Support : 317-885-6330 x 3
Main : 317-885-6330

EMAIL / WEB

sales@omnisite.com
support@omnisite.com
www.OmniSite.com/products

©2025

Your Local Sales Representative is

OmniSite